

# ***IN THEIR SHOES***

*Things we do and why we do them at Missouri State University-West Plains*



# Missouri State University System

**Missouri State University  
(Springfield, MO)**



**Missouri State University-  
West Plains  
(West Plains, MO)**



**Missouri State University  
Research Campus  
(Mountain Grove, MO)**



**Missouri State University-  
West Plains  
Mountain Grove Campus**



**Missouri State University-  
West Plains  
Houston Campus**



**Missouri State University-  
West Plains  
(China Campus)**



# WEST PLAINS CAMPUS



Founded in 1963.

The open admission campus of the Missouri State University System.

Offers associate degrees, transfer programs, certificates, and training for immediate employment.

Accredited by the Higher Learning Commission of the North Central Association.

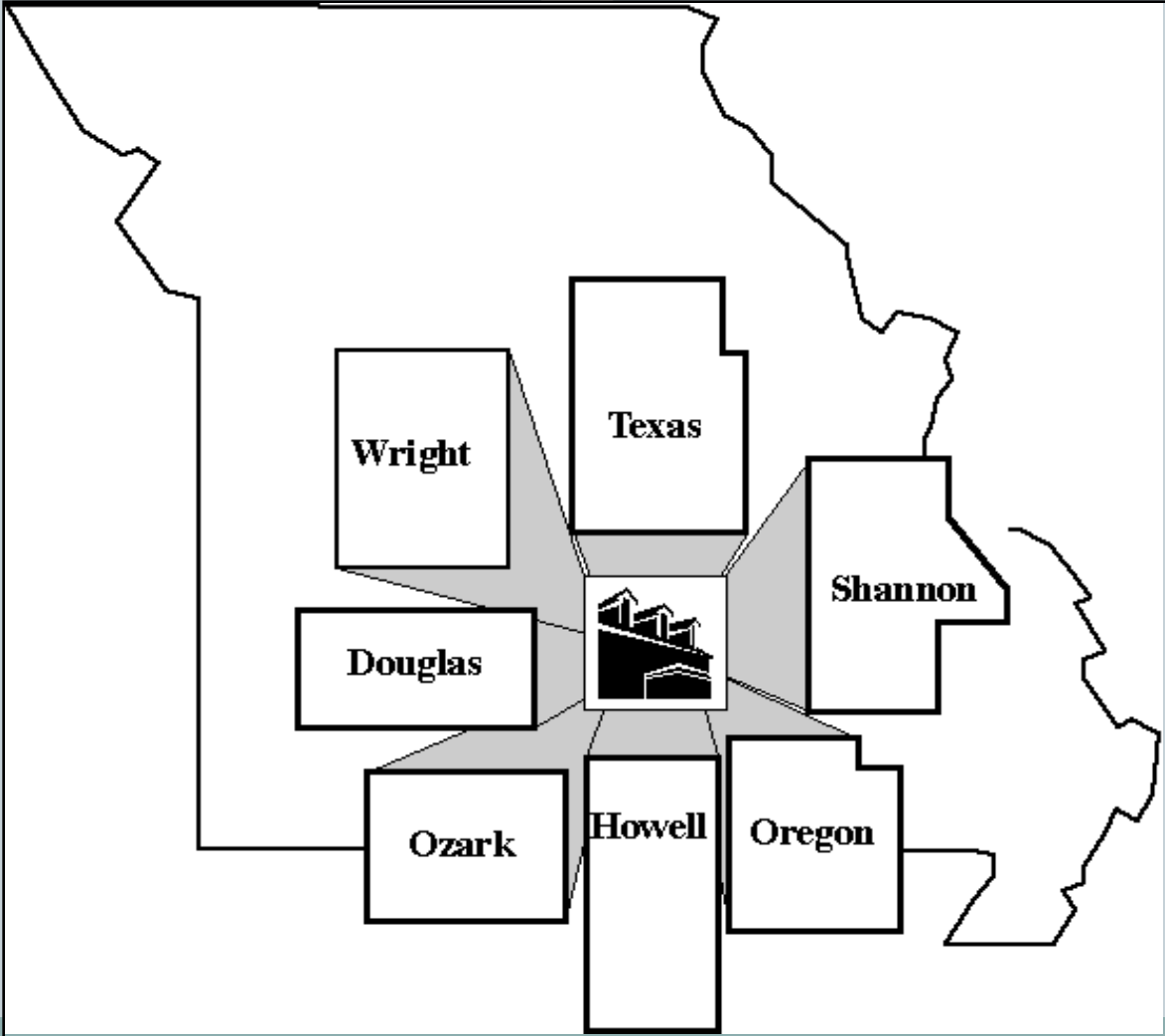
First-generation students comprise more than fifty percent of the total enrollment and more than sixty percent of first-time, full-time freshmen.



Missouri State University™

W E S T P L A I N S

# OUR SERVICE REGION



# EDUCATIONAL REALITY



- 69 percent of Missouri's high school students advance to college, university or vocational training.
- 67.2 percent of the nation's high school graduates from the class of 2007 were enrolled in colleges or universities alone.
- Only 50 percent of high school seniors in the Missouri State-West Plains seven-county service region move on to a postsecondary educational setting of any type.

# WHERE WE ARE NOW



# WHERE WE REALLY ARE NOW



# WHERE WE NEED TO BE

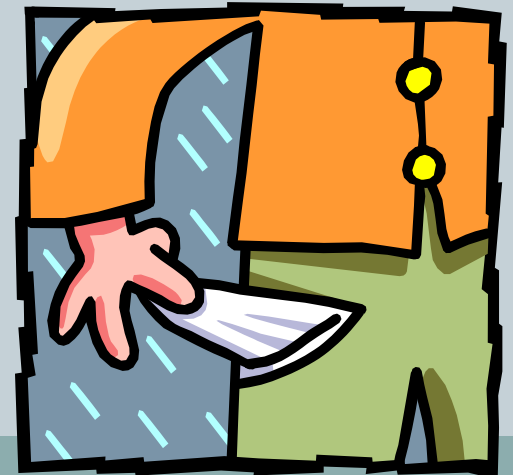




# ECONOMIC REALITY

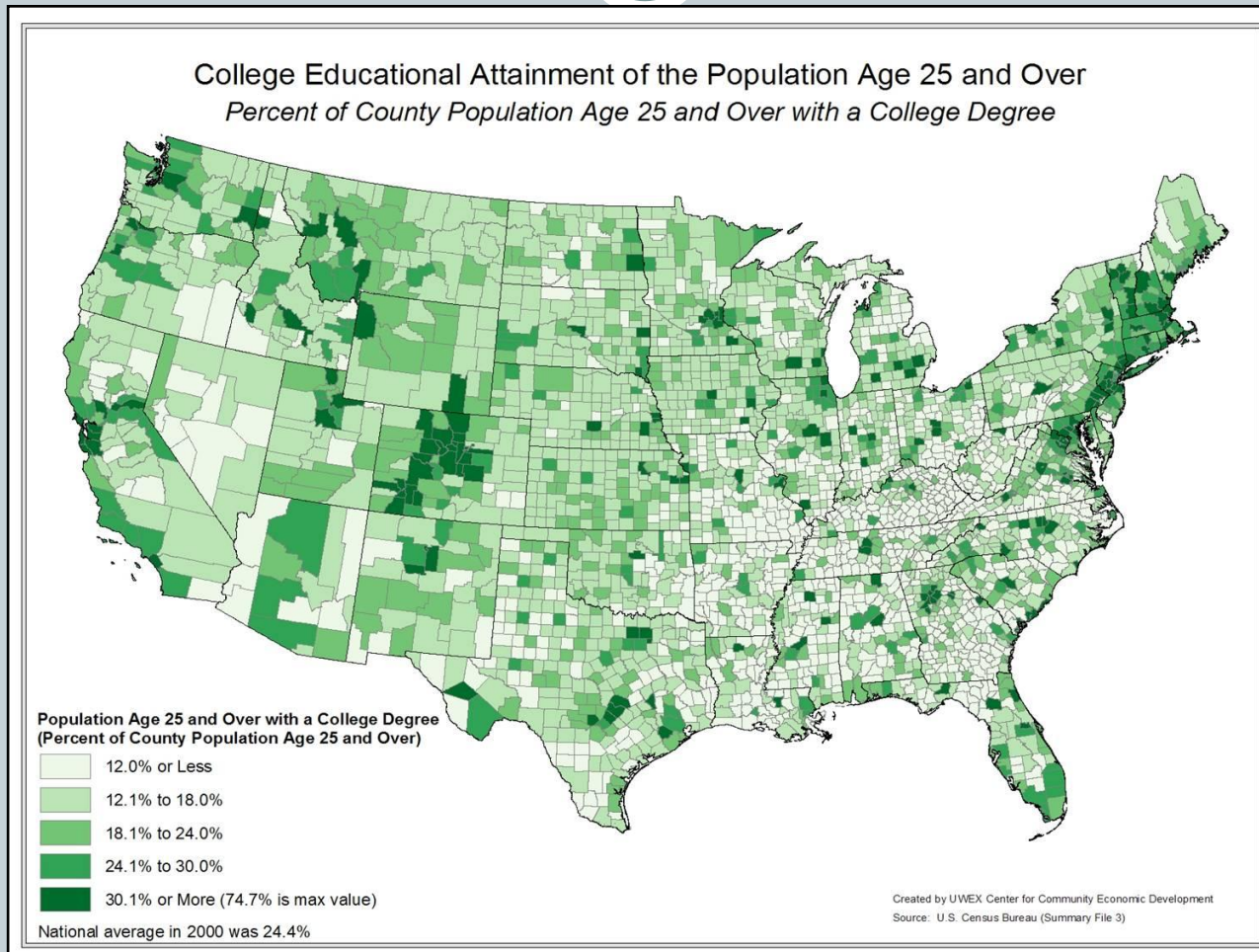


- Missouri State University-West Plains and its service area lie primarily within the 8th Congressional District of Missouri. The district is the 14th poorest Congressional District in the United States in terms of median household income (Census data, 2005). Twelve of the 13 poorest counties in Missouri are in this district.



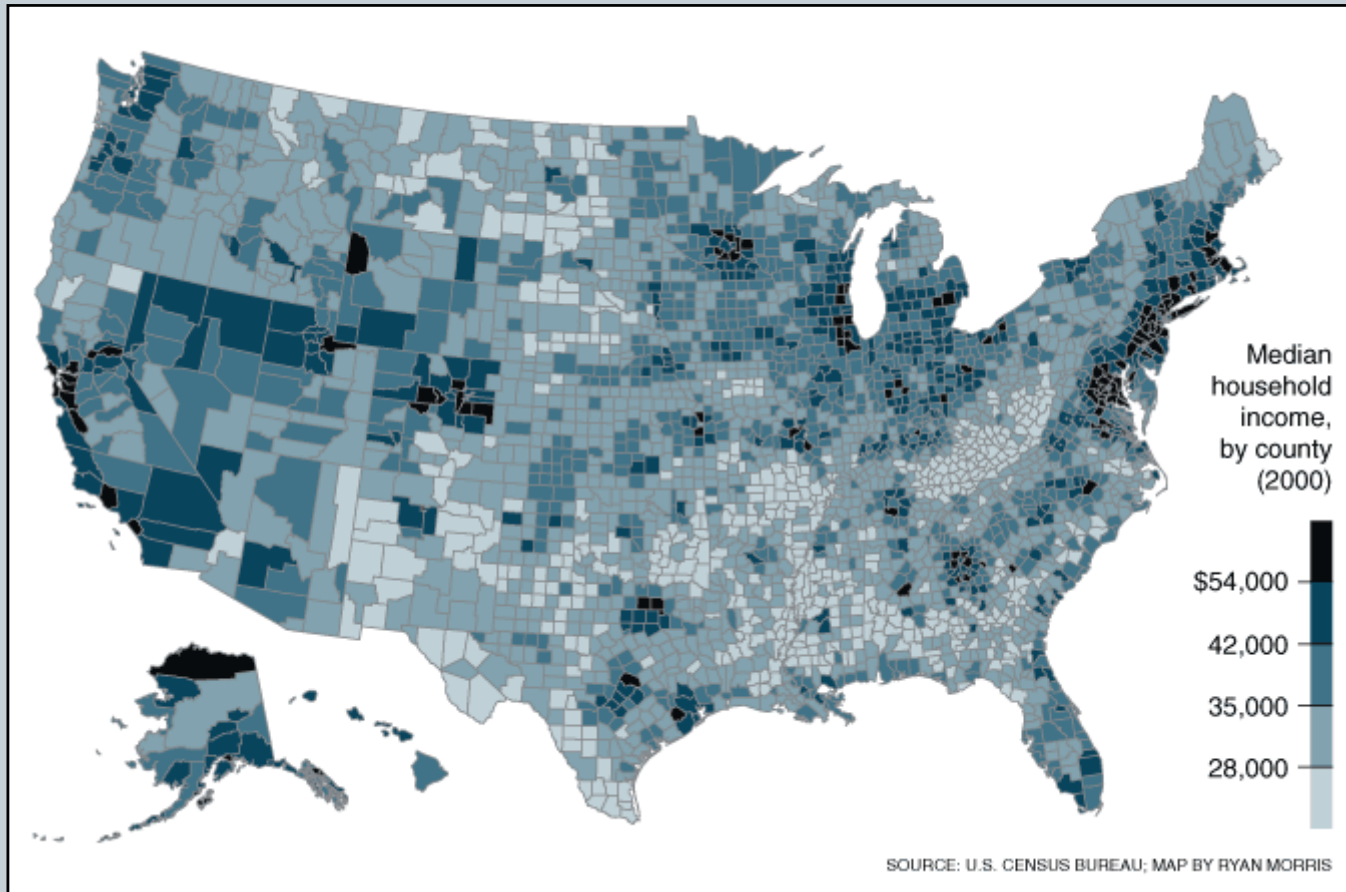
# COLLEGE

*Note the light coloration that denotes lesser college attainment.*



# INCOME

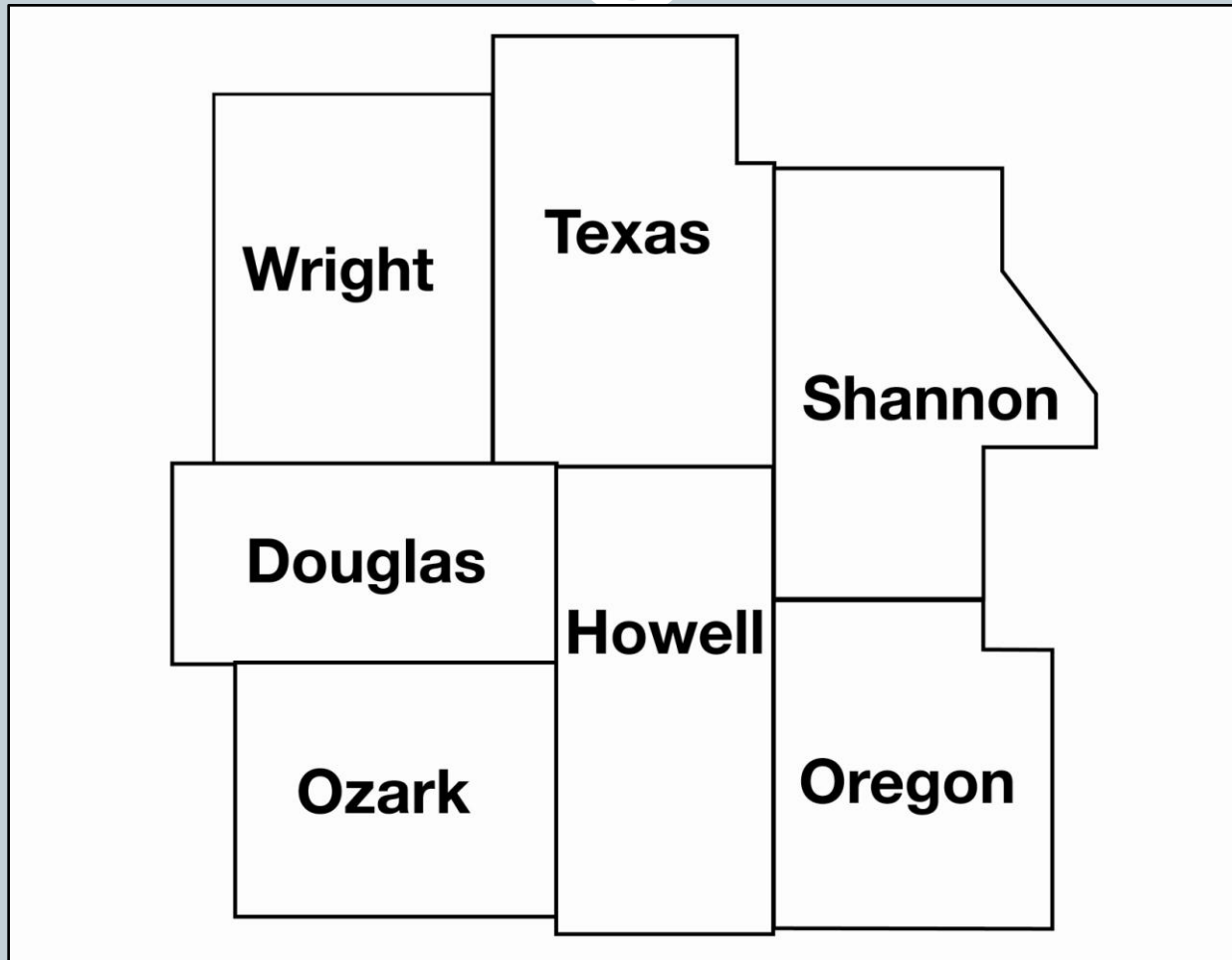
*Note the light coloration that denotes lesser household income.*



# HOW DOES IT ADD UP?



# “DOUBLE WHAMMY”



# DARR HONORS PROGRAM

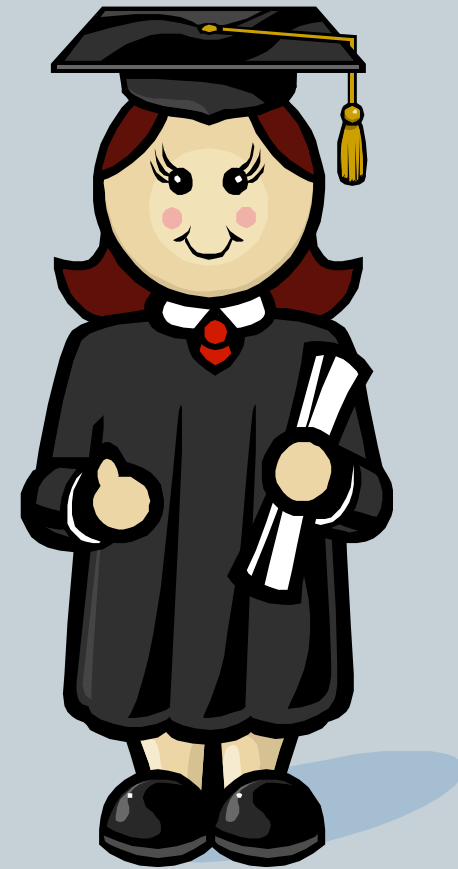


- The William and Virginia Darr Honors Program at Missouri State University-West Plains seeks to create a collegial environment that nurtures and empowers students of high academic and/or artistic potential to become educated persons.



# SPECIALTY SCHOLARSHIPS

- Jack Kent Cooke Foundation – Undergraduate Transfer Scholarship
- Tilles Scholarship
- Other external scholarships
- A faculty/staff team selected Autumn Forschler, a student in the Darr Honors Program, to apply for a prestigious Jack Kent Cooke Foundation Undergraduate Transfer Scholarship. The team also assisted her with the complex application process. If selected, the scholarship awards up to \$30,000 per year for Autumn to complete her bachelor's degree. Autumn, a graduate of Thayer High School near West Plains, aspires to complete a degree in Marine Biology and study reef ecology in Africa and Australia. This is the first such application from the West Plains campus.



# CORPS OF OPPORTUNITY



- A combination of scholarships and campus jobs up to a maximum of \$10,000.00 per year.
- Students must be of excellent character, have financial need, demonstrate a strong work ethic and show scholastic potential.
- Similar to a graduate assistantship.





# PROFESSIONAL SERVICES



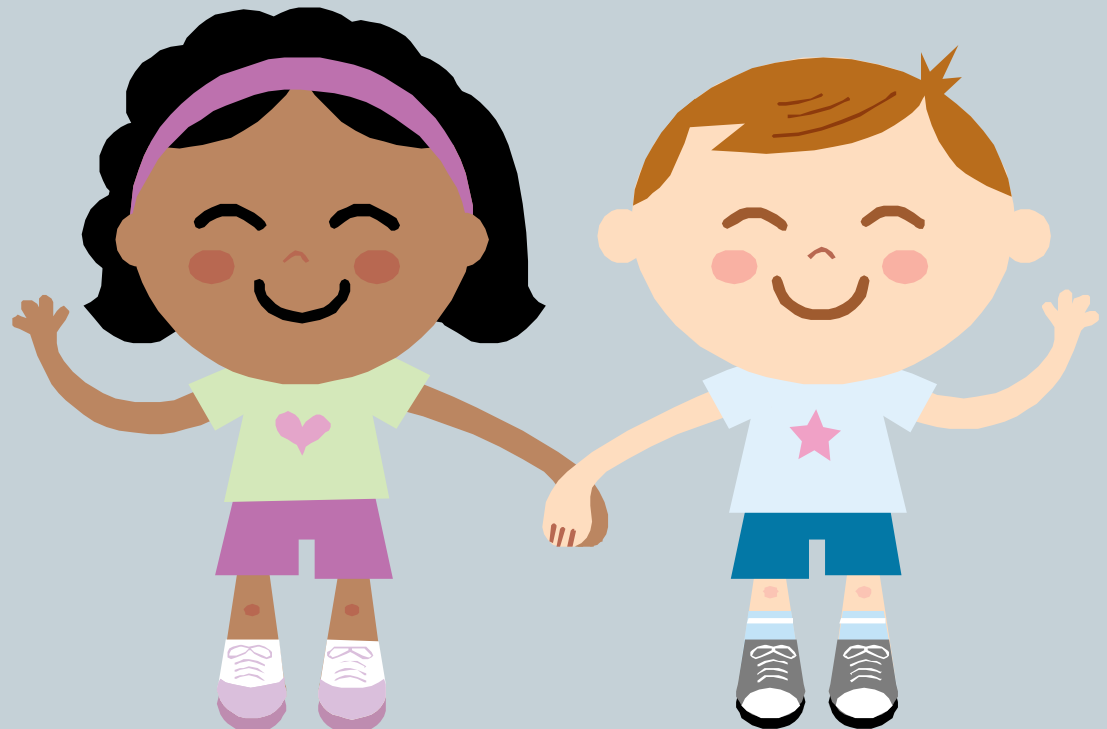
- Medical Services
- Counseling Services
- Legal Services
- Credit Counseling
- Notary Services



# CHILD CARE VOUCHERS



- An initiative in progress that will help needy parents secure quality care for their children while they attend class.



# EMERGENCY GRANTS



- An initiative in its second year that enables students to handle financial emergencies while remaining in school.



# PROJECT REWARD



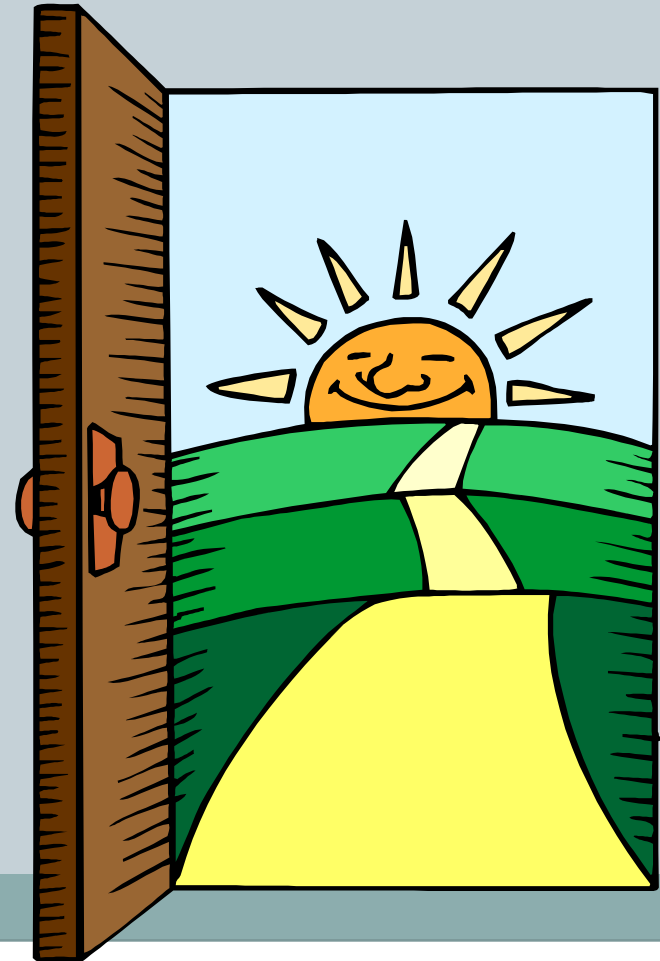
- Our dream for a Single Parent Educational Resource Center.



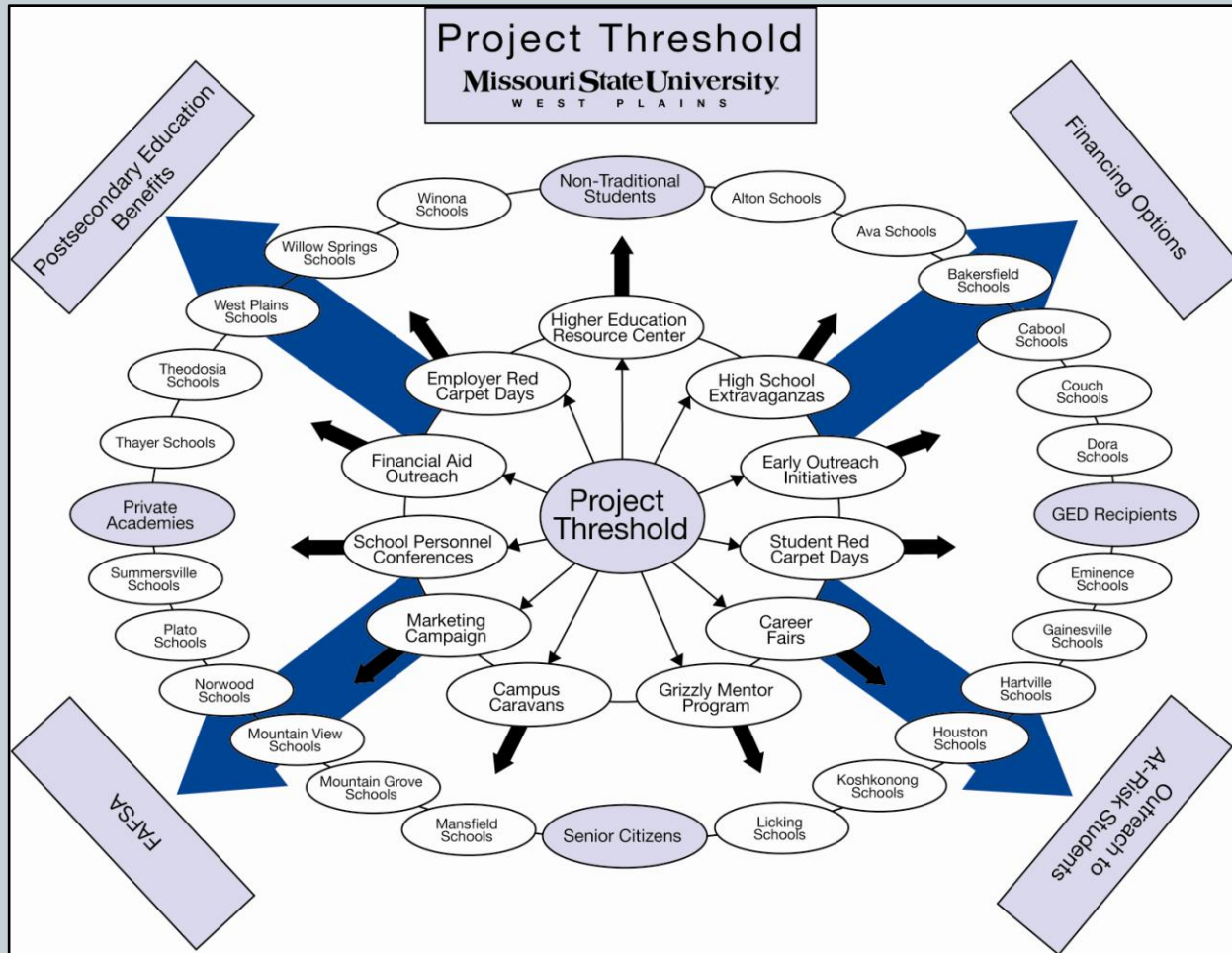
# PROJECT THRESHOLD



- Our dream for a comprehensive program to combat the relatively weak college participation pool from service area schools.



# PROJECT THRESHOLD



# ENGAGEMENT



- One of our next significant initiatives
- IDS classes
- Satisfaction surveys
- Measurement of student learning
- Expanded extracurricular opportunities
- Community College Survey of Student Engagement



# TRAVEL OPPORTUNITIES





# TRAVEL OPPORTUNITIES



# TRAVEL OPPORTUNITIES



# TRAVEL OPPORTUNITIES



# TRAVEL OPPORTUNITIES



# SPORTS





# SPORTS



# SPORTS

*Men's and women's club golf. Head Coach Phil Wade, center left, is a former Missouri Amateur Champion. Assistant Coach Tommy Roe is the son of legendary Brooklyn Dodgers pitcher Preacher Roe.*





# ENROLLMENTS



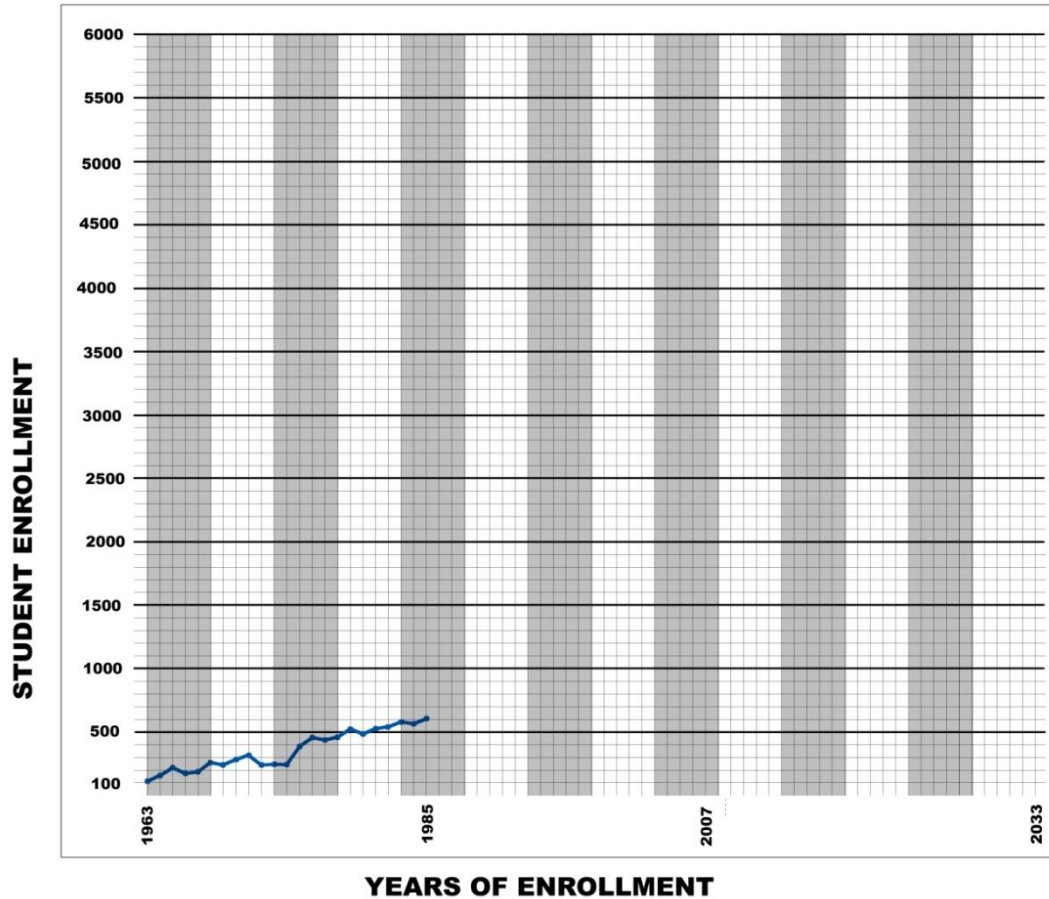
## *FIVE CONSECUTIVE SEMESTERS OF GROWTH*

- Fall 2007 - 1771 (all-time record)
- Spring 2008 - 1418 (all-time record)
- Summer 2008 – 502 (increase, but not a record)
- Fall 2008 – 1834 (all-time record)
- Spring 2009 - 1512 (all-time record)
- Fall 2009 – Our goal is 2009 (all-time record)



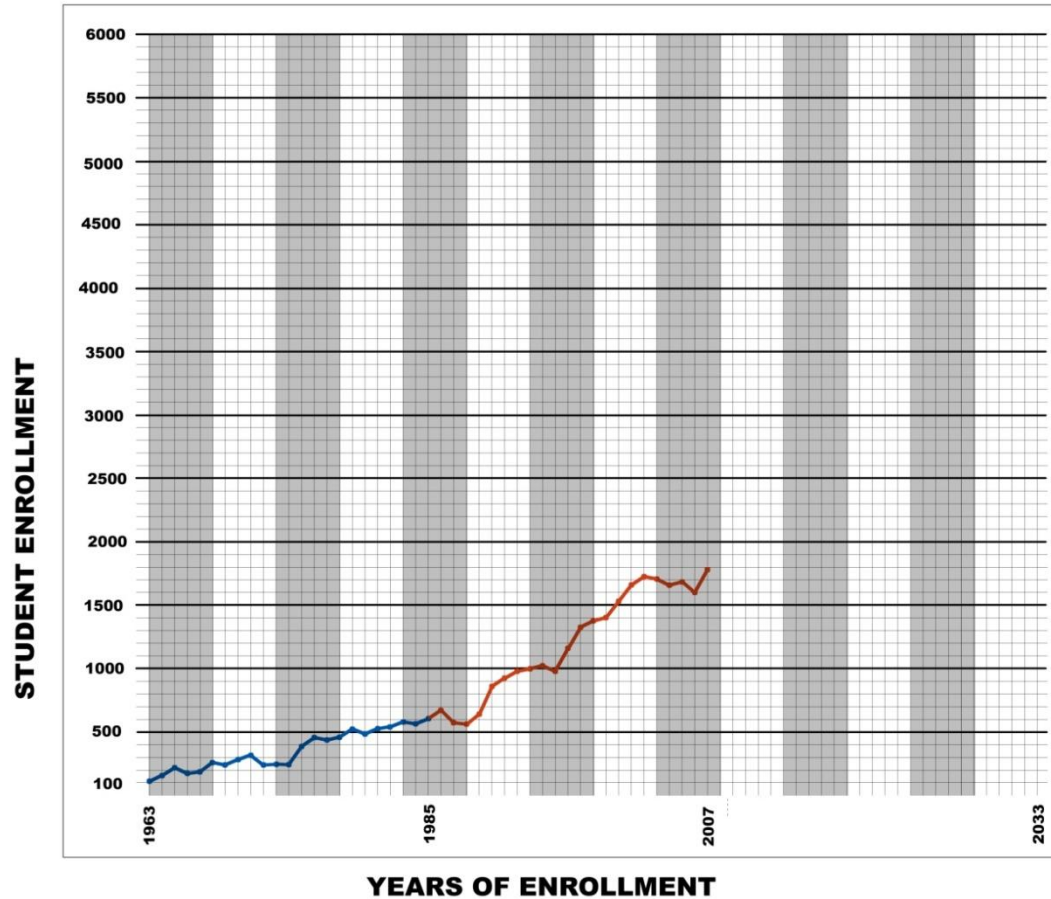
# ENROLLMENT GROWTH THROUGH 1986

9.75% Annual Growth



# ENROLLMENT GROWTH 1986 to 2007

5.4% Annual Growth

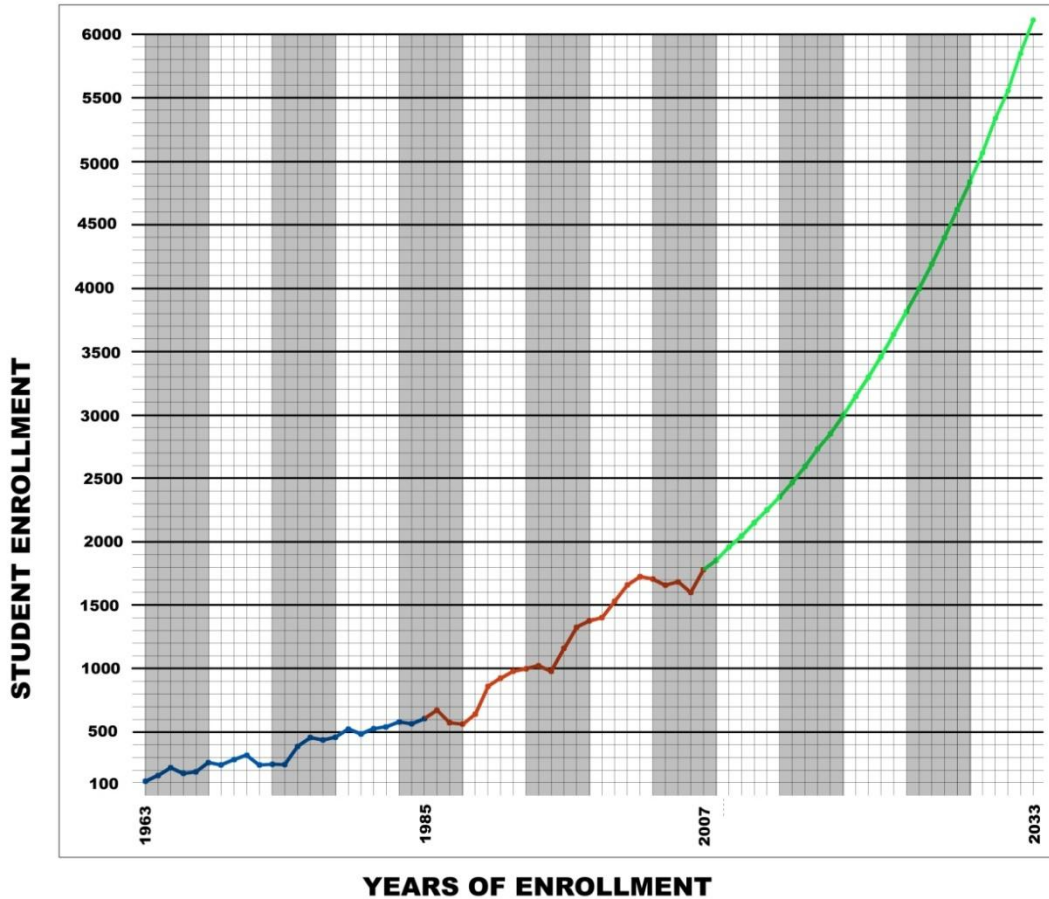


**WHAT IF???**



# PROJECTED GROWTH NEXT 25 YEARS

Based on 5% Growth per Year



**ENROLLMENT IS GUARANTEED, RIGHT?**



# RESTRICTIONS



- While student enrollment is surging towards 2000, campus residential living is limited to one hall with 60 beds.
- The Student Center does not meet the needs of the campus, and the recent ice storm was devastating to the facility.
- We need to find ways to overcome these restrictions.



# RESTRICTIONS

*The Grizzly House Residence Hall – Build in 1994 – Accommodates 60 students.*





# RESTRICTIONS

*Putnam Student Center*



# RESTRICTIONS

*Putnam Student Center*



# RESTRICTIONS

*Putnam Student Center*



**SO, WHAT'S OUR ATTITUDE?**



**If you're going to be a bear, be a Grizzly!**

