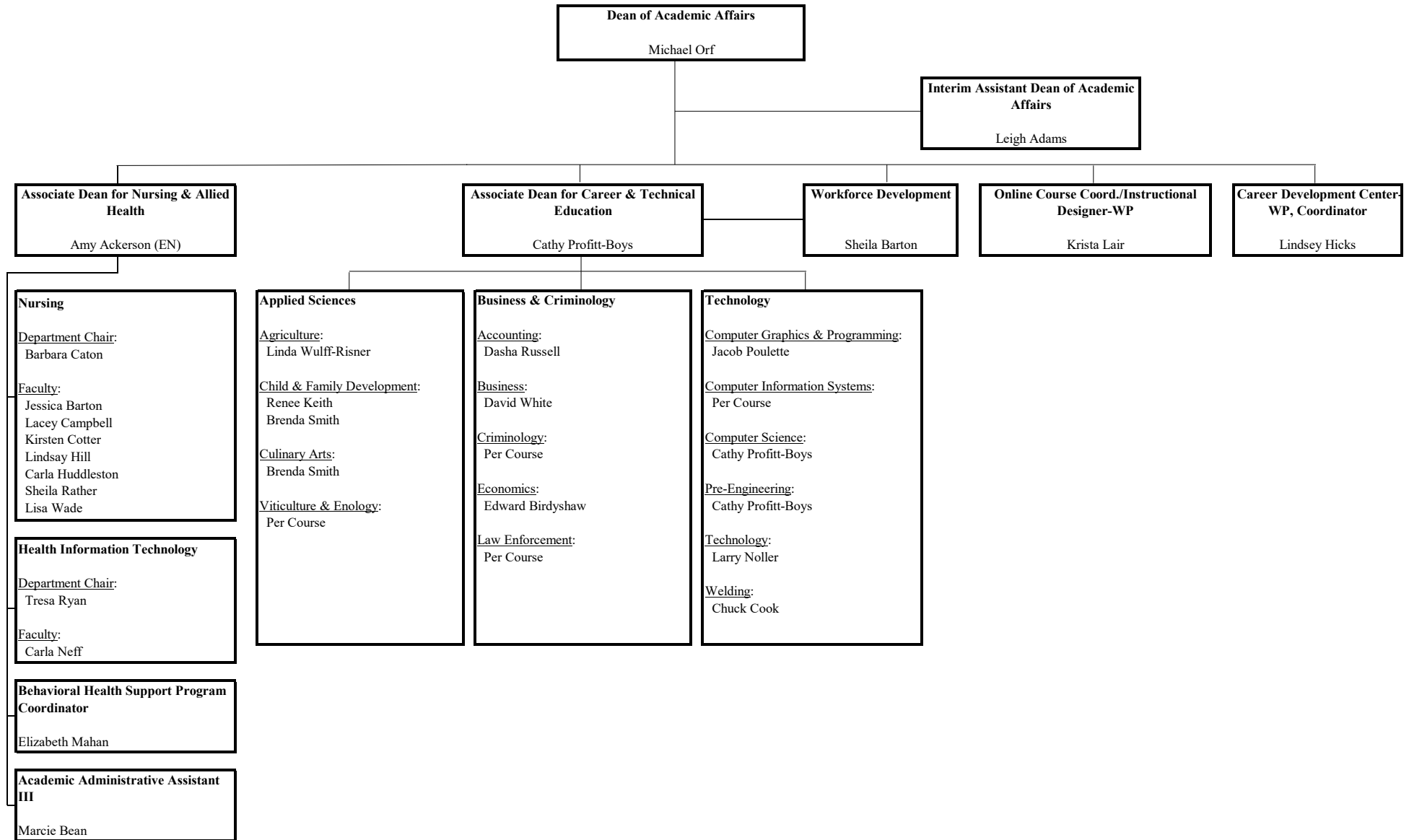


*NOTE: Organizational Charts for each area follow.
PT-designates Part-time employee
GF-designates grant-funded position
EN-designates endowed position*

NOTE: Several faculty teach in multiple disciplines and are included in multiple counts.

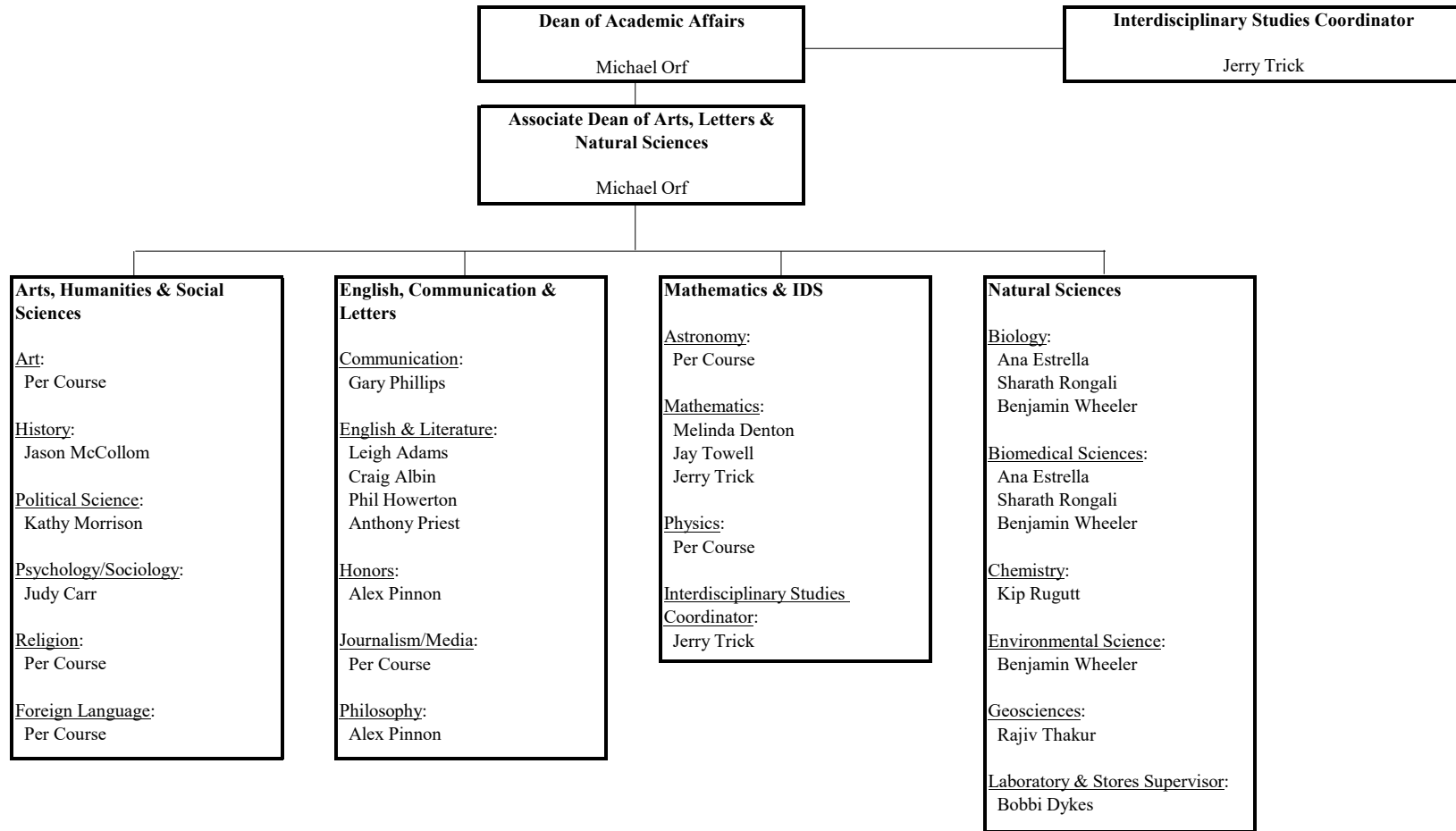
NOTE: Academic Affairs Organizational Chart continues on the next page.



*NOTE: Organizational Charts for each area follow.
PT-designates Part-time employee
GF-designates grant-funded position
EN-designates endowed position*

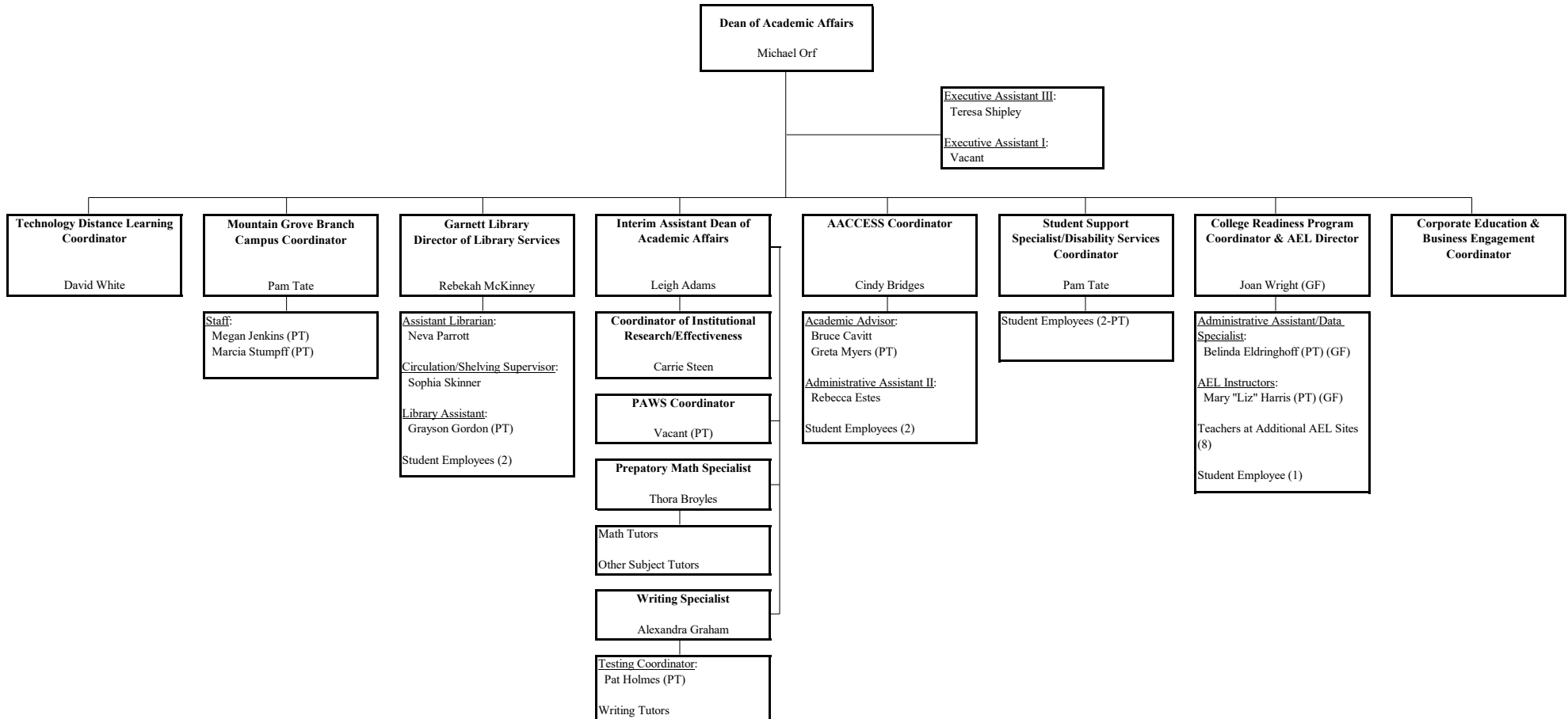
NOTE: Several faculty teach in multiple disciplines and are included in multiple counts.

NOTE: Academic Affairs Organizational Chart continues on the next page.

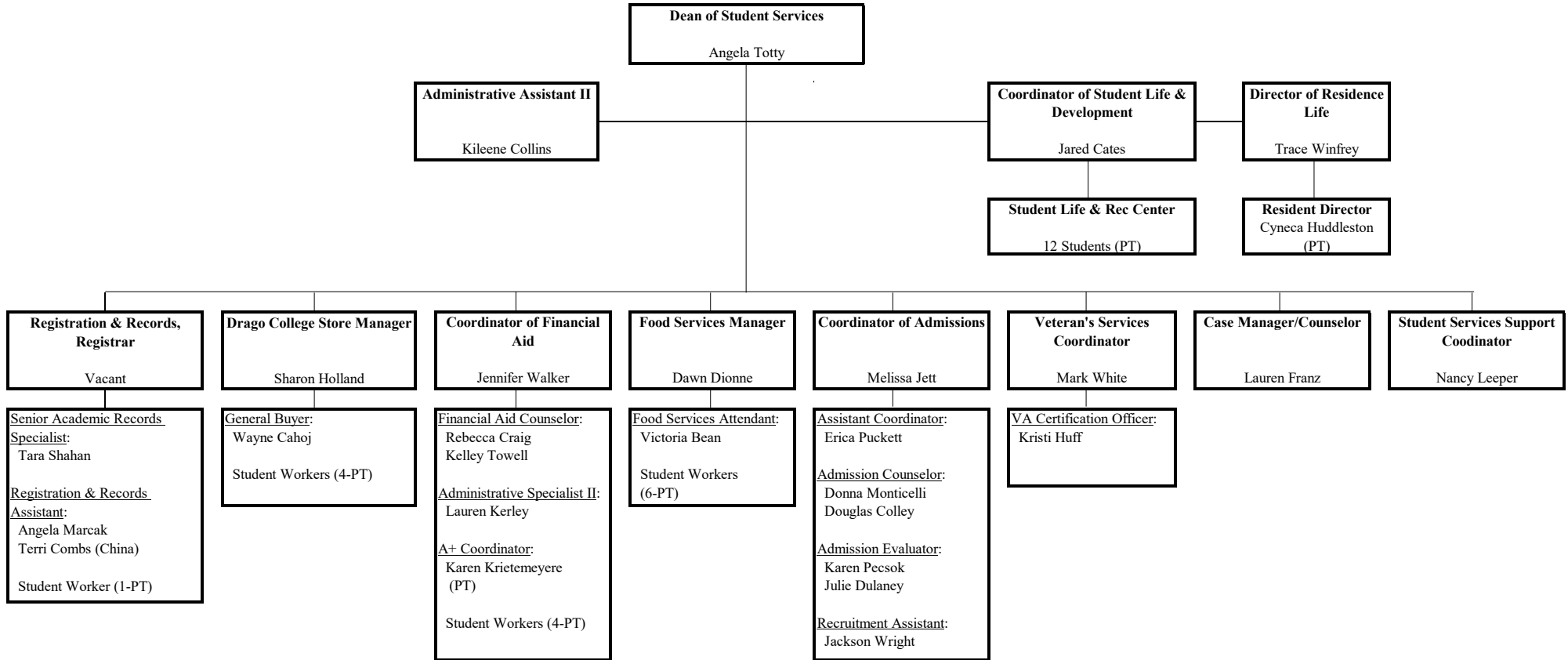


*NOTE: Organizational Charts for each area follow.
PT-designates Part-time employee
GF-designates grant-funded position
EN-designates endowed position*

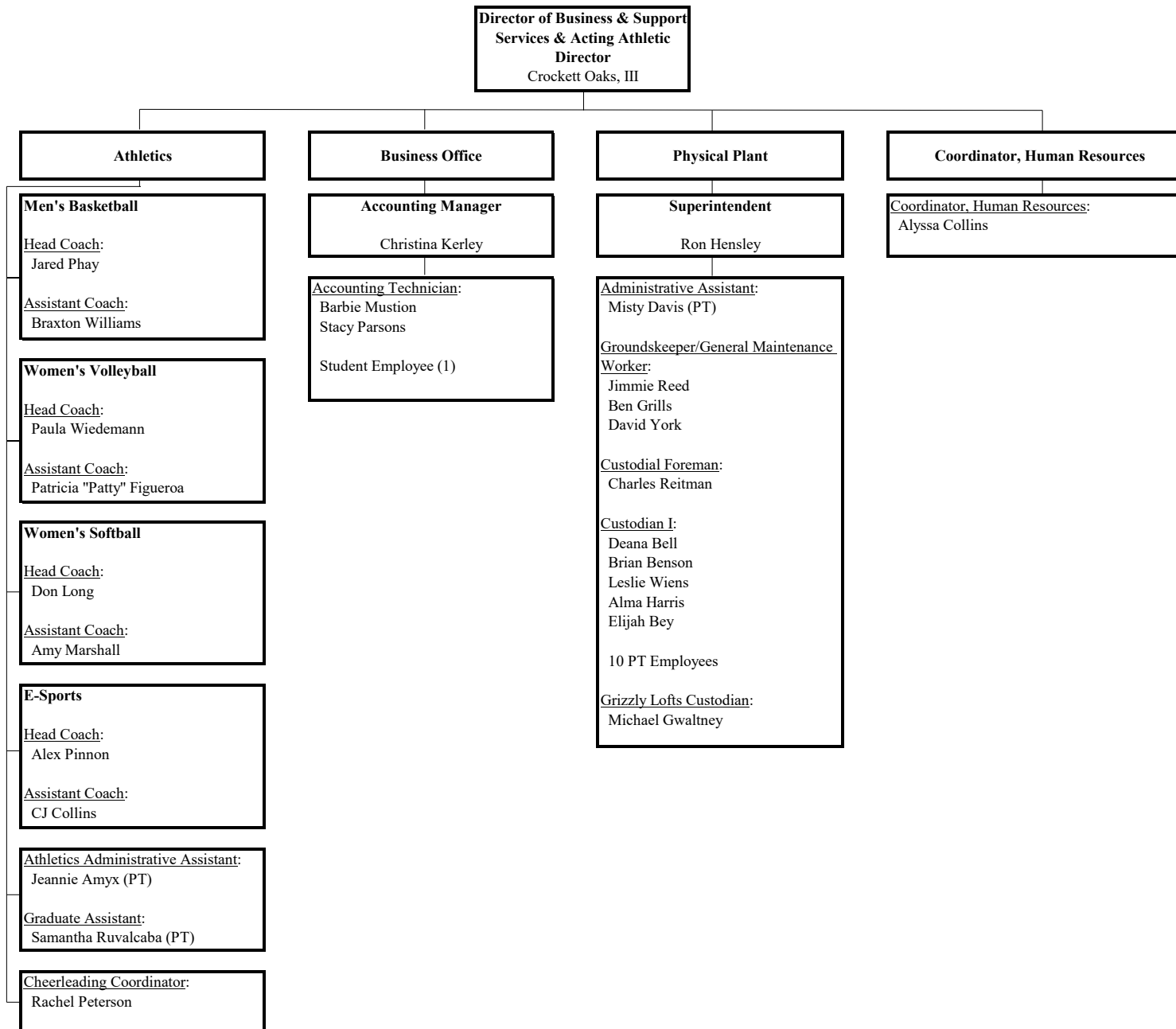
NOTE: Several faculty teach in multiple disciplines and are included in multiple counts.



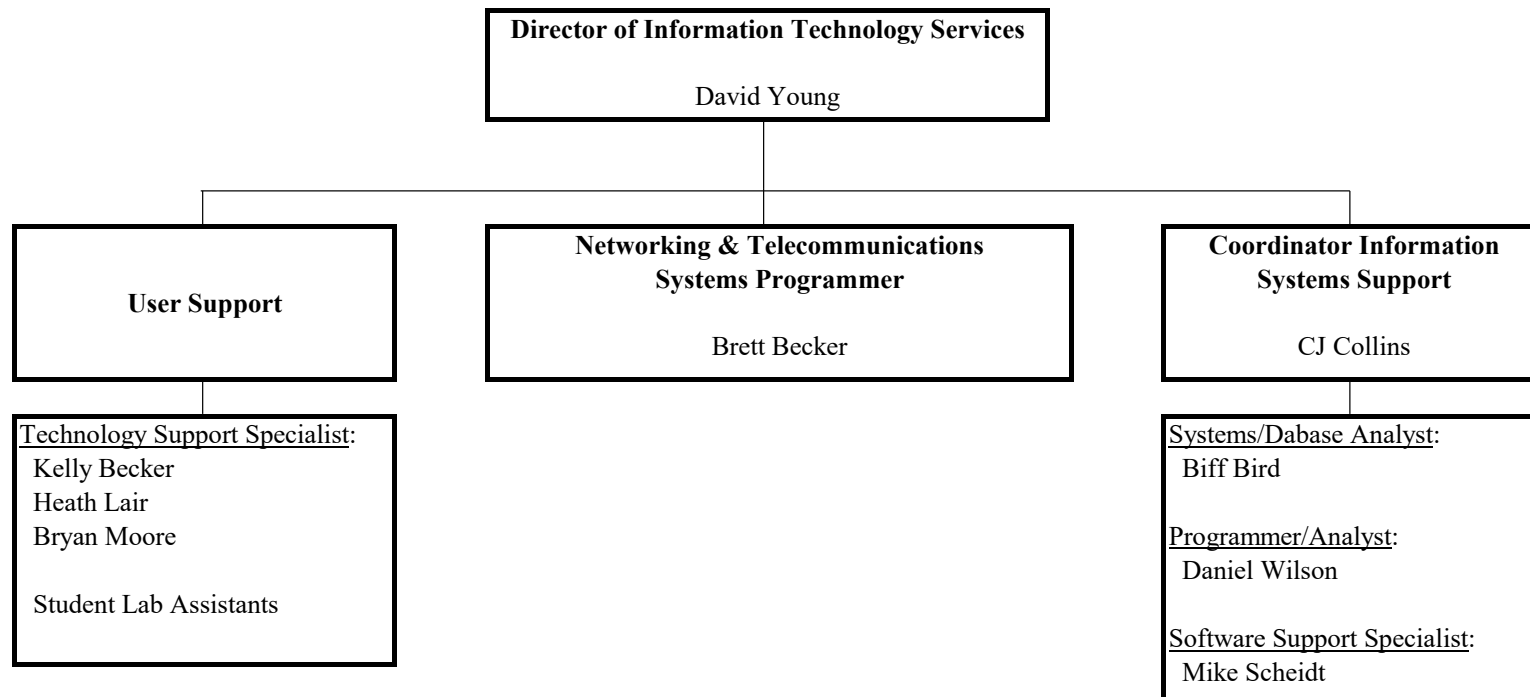
*NOTE: Organizational Charts for each area follow.
 PT-designates Part-time employee
 GF-designates grant-funded position
 EN-designates endowed position*



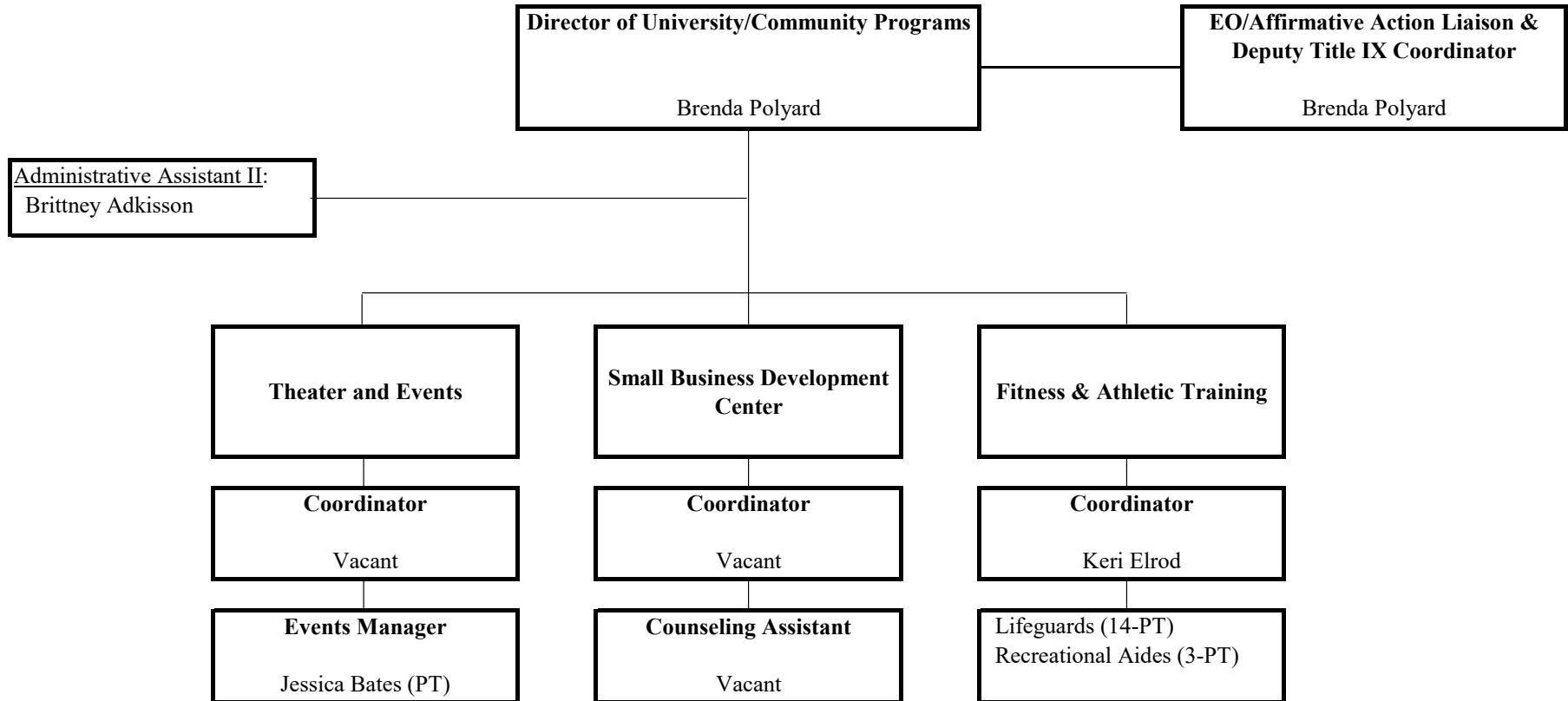
NOTE: Organizational Charts for each area follow.
PT-designates Part-time employee
GF-designates grant-funded position
EN-designates endowed position



NOTE: Organizational Charts for each area follow.
PT-designates Part-time employee
GF-designates grant-funded position
EN-designates endowed position

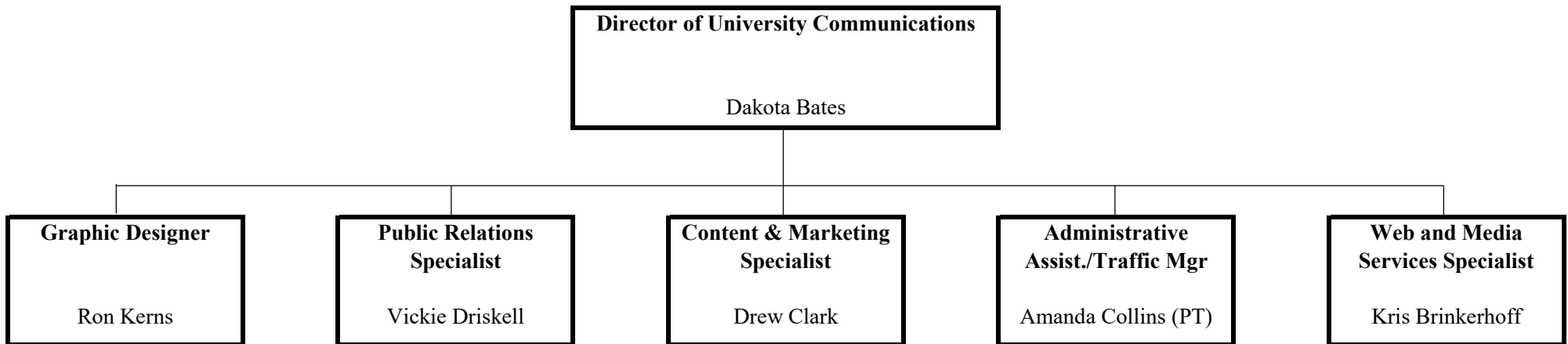


*NOTE: Organizational Charts for each area follow.
PT-designates Part-time employee
GF-designates grant-funded position
EN-designates endowed position*



*NOTE: Organizational Charts for each area follow.
PT-designates Part-time employee
GF-designates grant-funded position
EN-designates endowed position*

University Communications Organizational Chart



NOTE: Organizational Charts for each area follow.

PT-designates Part-time employee

GF-designates grant-funded position

EN-designates endowed position